




WALK GUIDE

 40 to 60 mins	 2.5 miles
---	---

Starting at The Old Gaol front door. Cross the road, and turn down Verney Close. At the end of Verney Close, there is a small wooded area referred to as the Verney Close Spinney. Take the right fork through the Spinney and cross the bridge over the river. After the bridge, turn right and walk past the Skate Park onto Bridge Street.

- 1 Turn left onto Bridge Street, cross at the crossing and take the first right down Ford Street. Immediately before the bridge turn left down onto the riverside path called Chris Nichols Walk. Follow the path along the **River Great Ouse** into **Chandos Park**.
- 2
- 3 You will see a bowls club on your left and the first of many **University of Buckingham** buildings will come into view on the opposite side of the river.*

 * To avoid the steps, turn left after the tennis courts and continue onto Chandos Road. Turn right and walk up the hill to the car park and rejoin the walk at **5**.

- 4 At the far end of the park is a wooden footbridge. Use it to cross the river and then turn left onto a grass track. Follow the river round until you pass under a bridge. Notice **The Flish** and the **Lord's Bridge** behind it. Take a sharp right and follow the tarmac path up and over the bridge you have just passed under. Turn left and climb the steps onto Station Road. Stay straight and at the Buckingham University's Chandos Road Building cross the road into the small car park.
- 5 On the opposite side of the car park, you will see the entrance to the **Railway Walk**. Join the **Railway Walk** keeping the sunken trench of the old railway line to your right. Just before the **Railway Walk** meets the Southern Bypass, turn left at the crossroads and follow the edge of the school playing fields.

- 6 The path emerges onto London Road. Turn right, walk approximately 10 metres and cross the road. There is a footpath straight in front of you. The walk continues off to the left along a grass track.** Go straight on between Otters brook on your left and the backs of houses to your right. Walk through the Otters brook Play Area out onto Bourton Road. Turn right, walk 15 metres, then cross the road and go over the footbridge into **Bourton Park**.

 ** This track can become muddy, so in wet weather please use the alternative route and take the right fork onto Hare Close and turn left onto Badger's Way. At the end of Badger's Way cross Bourton Road and go over the footbridge into Bourton Park.

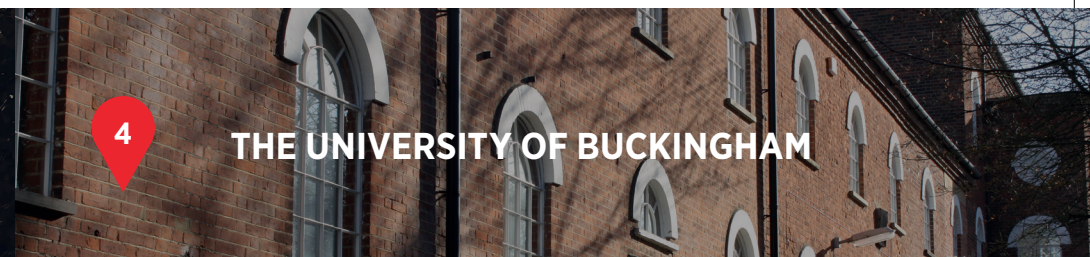
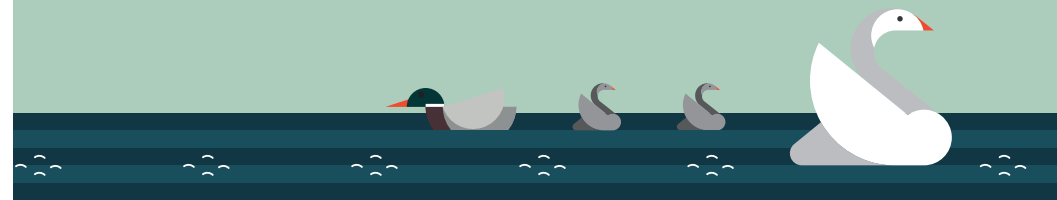
After the bridge, turn left and follow the path along the river, eventually passing a small pond system on your right. Turn left onto the Ouse Valley Way and continue past Stratford Fields Play Space on your right. Continue until you see a metal bridge on your left. Cross the river and the path splits three ways. Take the right-hand path which follows the river as it bends round to the left. When the path reaches a T-junction, turn right and you will see a large footbridge off to your right.

- P** Cross the bridge and you will see the **Cornwall's Meadow car park**. Cross the car park, and enter the Meadow Walk Shopping Centre. Continue past the various shops and cafés. Either walkway will bring you out onto the High Street where you will be able to see the Old Gaol!



RIVER GREAT OUSE

Much of the Circular walk follows the route of the River Great Ouse. The first settlement of Buckingham was located within a loop of the river. At 230 km long, it is the longest of three Ouses in Britain, flowing from Syresham in Northamptonshire to the Wash estuary. There is a diverse array of fish, birds and other wildlife that call the river home. A variety of fish can be seen from small minnows to large chub. Roach, dace, perch and even the odd trout or pike have also been spotted. Look out for the swans, the emblem of Buckingham, which nest along the banks.



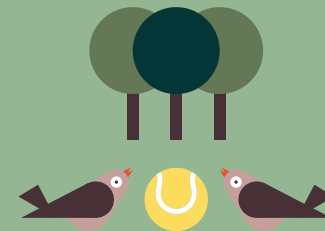
THE UNIVERSITY OF BUCKINGHAM

Buckingham is the only university independent of direct government support in the United Kingdom. The University College was formally opened in February 1976 by the Rt. Hon. Mrs Margaret Thatcher, and its University Charter was granted in 1983. The Tanlaw Mill Building occupies the site of an ancient mill mentioned in the Domesday Book; it was bought and converted by the university in 1981. The Chandos Road Building was originally a foundry producing traction engines and other farm machinery - one of the first factories to produce steam cars - then a mill, and latterly a factory producing peptonised milk.



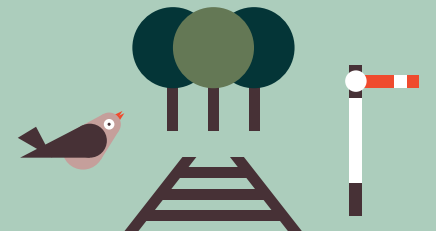
CHANDOS PARK

The perfect spot for a picnic, Chandos Park's main feature is the River Great Ouse running through the heart of the old town. The park is great for dog walking, bird watching or just relaxing on a nice day. Chandos boasts an excellent play area, a Bowls Club, a multi-use games area, and a Tennis Club. The Park is named after the Duke of Buckingham's son, whose title was Marquess of Chandos. Can you spot the Parish Church of St Peter and St Paul? Built in 1780, it stands on the hill first occupied by a Saxon fort and then by a Norman castle.



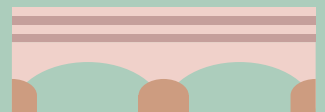
RAILWAY WALK

The Walk follows the line of the old railway and you can still see the remains of the railway's construction. It was part of the Banbury to Verney Junction Branch Line which opened in 1850 and closed to the public in 1964. On 4th April 1966, Queen Elizabeth II visited Buckingham on the Royal Train. It arrived in Buckingham from London Euston and was the last passenger train to visit the station. While the line no longer exists, the Railway Walk is now one of the main walks through town and because of the height of its embankment provides some great views over the old part of the town - an excellent way to spend a few hours walking.



THE FLOSH + LORD'S BRIDGE

Hunter Street crosses the River Great Ouse over the Lord's Bridge, which for thousands of years was a wooden bridge which was repeatedly subjected to flooding. The current stone bridge was built in 1846, with the redirection of the river (the original line of the River Great Ouse ran through where the railway embankment was built). The Flish, a particularly attractive weir, is upstream of Town Mill (now Tanlaw Mill) and it was built to maintain water levels in the mill leat. Why it received its name 'The Flish' we don't know, for that word is usually associated with stagnant ponds.



BOURTON PARK + HEARTLANDS

Bourton Park, also known as Bourton Meadow, runs from Stratford Fields to the bypass, by the course of the old Buckingham arm of the Grand Union Canal and the River Great Ouse. It is an attractive open park with dog exercise areas, two children's playgrounds, a multi-use games area, a community orchard, and lovely walking areas. The Heartlands connect Bourton Park with the town and boast an impressive amount of wildlife. In the centre of this space is an example of a ridge and furrow field created in the Middle Ages by ploughing.

